



# Standard Cylinders

Our inventory of standard cylinders includes pneumatic, hydraulic welded, linear position hydraulic, and super heavy-duty hydraulic options. Full catalogs with specifications for each are available on our website.

## Pneumatic Cylinders 100 Series

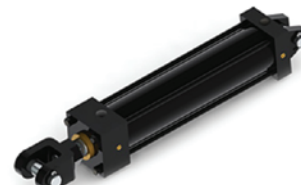


- 250 PSI Pneumatic / 750 PSI Hydraulic Operating Pressure
- 1 1/2" to 12" Bore (Other Bore Sizes Upon Request)
- Tie Rod Cylinder
- Ground and Polished Hard Chrome Plated Piston Rod
- Honed and Chrome Plated Barrel I.D.
- Polyurethane Seals
- All NFPA Mountings Available

[Download 100 Series Pneumatic Cylinder Catalog](#)



## Pneumatic Cylinders 110 Series



- 250 PSI Pneumatic / 750 PSI Hydraulic Operating Pressure
- 1 1/2" to 5" Bore (Other Bore Sizes Upon Request)
- Tie Rod Cylinder
- Ground and Polished Hard Chrome Plated Piston Rod
- Honed and Chrome Plated Barrel I.D.
- Ultra-High Speed Cushioning
- Low Friction Seals
- Non Lubricated
- All NFPA Mountings Available

[Download 110 Series Pneumatic Cylinder Catalog](#)



## Hydraulic Welded Cylinders 2500 Series



- 3000 PSI Operating Pressure
- 1 1/2" to 6" Bore (Other Bore Sizes Upon Request)
- Welded Construction
- Ground and Polished Hard Chrome Plated Piston Rod
- Heavy Wall Honed Barrel I.D.
- Polyurethane Seals
- Some NFPA Mountings Available

[Download 2500 Series Pneumatic Cylinder Catalog](#)



## Hydraulic Cylinders 3000 Series

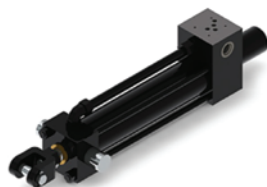


- 3000 PSI Operating Pressure
- 1 1/2" to 12" Bore (Other Bore Sizes Upon Request)
- Tie Rod Cylinder
- Ground and Polished Hard Chrome Plated Piston Rod
- Heavy Wall Honed Barrel I.D.
- Polyurethane Seals
- All NFPA Mountings Available

[Download 3000 Series Pneumatic Cylinder Catalog](#)



## Linear Position Hydraulic Cylinders 3050 Series



- 3000 PSI Operating Pressure
- 2" to 12" Bore (Other Bore Sizes Upon Request)
- Tie Rod Cylinder
- Ground and Polished Hard Chrome Plated Piston Rod
- Heavy Wall Honed Barrel I.D.
- Low Friction Seals
- NFPA Mountings Available
- Direct Servo Mounting
- Transducer Position Sensing

[Download 3050 Series Pneumatic Cylinder Catalog](#)



## Super Heavy Duty Hydraulic Cylinders 3500 Series



- 3500 PSI Operating Pressure
- 2 1/2" to 6" Bore (Other Bore Sizes Upon Request)
- 6-Tie Rod Cylinder for Extreme Service Requirements
- Ground and Polished, Heavy Chrome Plated Piston Rod
- 4-Bolt Flange Ports
- Polyurethane Seals
- Tie Rod, Clevis, Single Lug, Trunnion Mounts
- Heavy Duty Cushions for High Inertia Loads

[Download 3500 Series Pneumatic Cylinder Catalog](#)

